

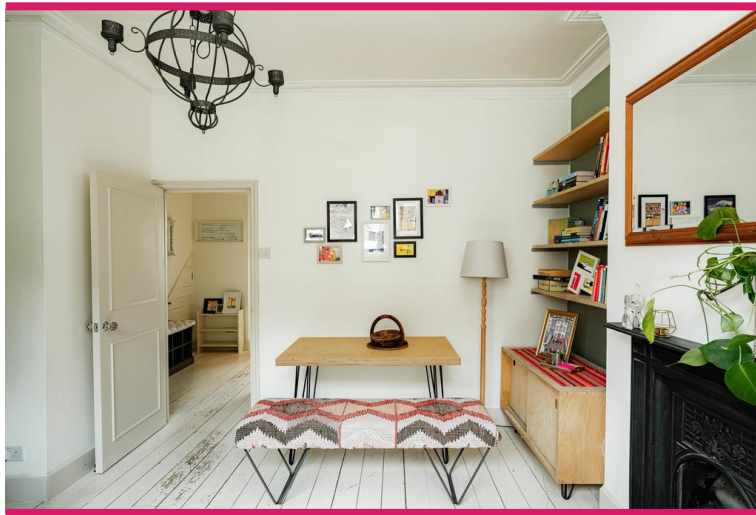


Wingmore Road | London | SE24 0AS

Share of Freehold

£475,000

- Share of freehold
- Generous private garden
- Potential to extend
- Architecturally designed
- Chain free
- Excellent transport links
- SE24
- Original features
- Ruskin park
- Excellent decorative order



A charming share of freehold ground floor garden flat, architecturally designed to offer the best layout with previously approved plans to extend further. This one bedroom property feels light and spacious throughout, with direct access to the generous secluded garden. Situated within the very popular Heme Hill, Camberwell, Brixton borders, with Ruskin park on the doorstep. Excellent transport links, walking distance of Loughborough Junction & Denmark Hill station and easy access to Brixton tube. A short stroll further for Herne Hill Village, Brockwell Park or Dulwich Village



%epcGraph_c_1_300%

Viewing Arrangements

Strictly by appointment

Contact Details

121 Denmark Hill

London

SE5 8EN

www.urbanvillagehomes.co.uk

sales@urbanvillagehomes.com

020 3519 9121

Agents Note: Whilst every care has been taken to prepare these sales particulars, they are for guidance purposes only. All measurements are approximate are for general guidance purposes only and whilst every care has been taken to ensure their accuracy, they should not be relied upon and potential buyers are advised to recheck the measurements