

Vicarage Grove | London | SE5 7LW

Share of Freehold

£595,000

- Split level
- Two double bedrooms
- Good decorative order
- Share of freehold
- Camberwell Church street
- Top floor
- Loft space
- Potential to extend
- Period property
- Spacious & light





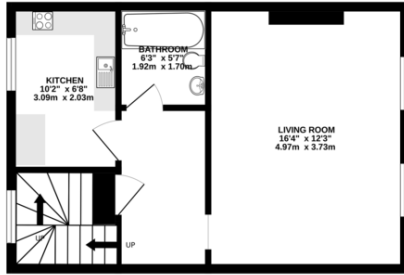
Split level large two-bedroom flat on a very desirable wide residential street in the heart of Camberwell. This share of freehold property is in excellent decorative order throughout, the first floor opens into a spacious hallway, large bright reception room, separate kitchen and bathroom, stairs then lead to the two very good-sized double bedrooms. Vicarage Grove offers a fantastic location just off Church Street, renowned for its excellent restaurant and bar scene.



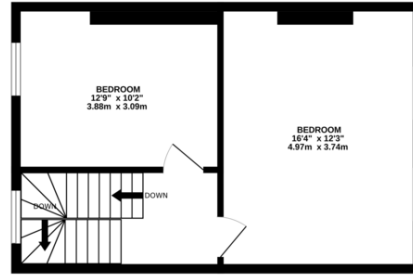
Score	Energy rating	Current	Potential
92+	A		
81-91	B		
69-80	C	70 C	80 C
55-68	D		
39-54	E		
21-38	F		
1-20	G		



FIRST FLOOR  
391 sq.ft. (36.3 sq.m.) approx.



SECOND FLOOR  
397 sq.ft. (36.9 sq.m.) approx.



TOTAL FLOOR AREA: 829sq.ft. (77.0 sq.m.) approx.

Whilst every attempt has been made to ensure the accuracy of the floorplan contained here, measurements of doors, windows, rooms and any other items are approximate and no responsibility is taken for any error, omission or mis-statement. This plan is for illustrative purposes only and should be used as such by any prospective purchaser. The services, systems and appliances shown have not been tested and no guarantee as to their operability or efficiency can be given.  
Made with Metagix 12/2025

## Viewing Arrangements

Strictly by appointment

## Contact Details

121 Denmark Hill

London

SE5 8EN

[www.urbanvillagehomes.co.uk](http://www.urbanvillagehomes.co.uk)

[sales@urbanvillagehomes.com](mailto:sales@urbanvillagehomes.com)

020 3519 9121

Agents Note: Whilst every care has been taken to prepare these sales particulars, they are for guidance purposes only. All measurements are approximate and are for general guidance purposes only and whilst every care has been taken to ensure their accuracy, they should not be relied upon and potential buyers are advised to recheck the measurements